



395 Glen Lyon Road Twizel

Matuka Lodge : Twizel

TripAdvisor Traveller Rated #1 in New Zealand 2019 & #20 in the World 2019 for B&B / Inns

Set in tranquil private surroundings with truly spectacular panoramic views over a magical trout pond to the staggering dramatic beauty of the Southern Alps beyond, this magnificent offering presents a unique gateway to an enviable lifestyle. Located just 3.5kms from Twizel, this is an extraordinary opportunity to live, earn & play in the heart of the Mackenzie Country at the gateway to Mt Cook National Park.

Poised on the edge of the trout pond, this luxury lodge is beautifully appointed.

7  6  2 

FOR SALE

Price by Negotiation

VIEW

twizel.ljhooker.co.nz/6ERH5T

CONTACT

Steve Howes 021 801 216

LJ HOOKER TWIZEL

(03) 435 0170

The expansive open plan living area located at the heart of the lodge creates stunning views through a dramatic steeple window & flows to a generous deck right on the waters' edge.

The lodge boasts 4 luxurious bedrooms, each with an en-suite, offering the perfect blend of contemporary comfort & elegant style. Each bedroom opens to a private deck allowing guests to soak in the breath-taking landscapes.

A reception area with a guest toilet, an office, a library, a generous galley-style kitchen with a serving room, a laundry & a substantial linen / storage room complete the lodge.

A separate owners' residence, with a sheltered private lawn, just a stroll away from the lodge ensures total privacy for guests & owners alike.

Providing memorable stays for many a discerning traveller, Matuka Lodge has been awarded the TripAdvisor Travellers Choice rating the last 4 consecutive years. This expansive property is ideally located to explore the splendour of the area including Lake Pukaki, Mt Cook National Park, A2O Cycle Trail & a host of outdoor activities. This is a unique opportunity, with massive income generation potential, in the heart of the tourist-booming Mackenzie Country. Contact Steve on 021 801 216. Private inspection invited strictly by appointment only.

Interactive 3D Video: <https://goo.gl/dHw5bT>

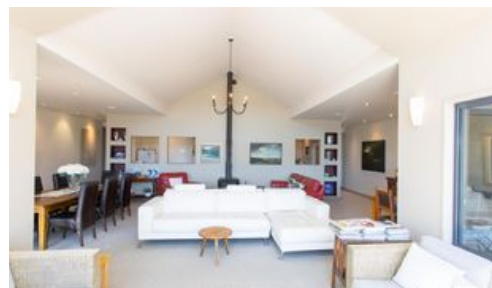
Price by Negotiation

House: 540m²

Land: 9200m²

Bedrooms: 7

Bathrooms: 6



More About this Property

PROPERTY ID	6ERH5T
PROPERTY TYPE	Residential
LAND AREA	9,200 m ²
HOUSE SIZE	540.00 m ²
INCLUDING	Air Conditioning, Built-In Wardrobes, Close to Shops, Close to Transport, Fireplace(s), Garden, Secure Parking
Licensed Real Estate Agents (REAA2008)	

LJ Hooker Twizel - Mackenzie Country Real Estate

CONTACT: Steve Howes
EMAIL: steveh.tekapo@ljh.co.nz
MOBILE: 021 801 216
PHONE: (03) 435 0170
FAX: (03) 435 0360

DISCLAIMER

The above information has been furnished to us by the Vendor. We have not verified whether or not that information is accurate and do not have any belief one way or the other in its accuracy. We do not accept any responsibility to any person for its accuracy and do no more than pass it on. All interested parties should make and rely upon their own enquiries in order to determine whether or not this information is in fact accurate.